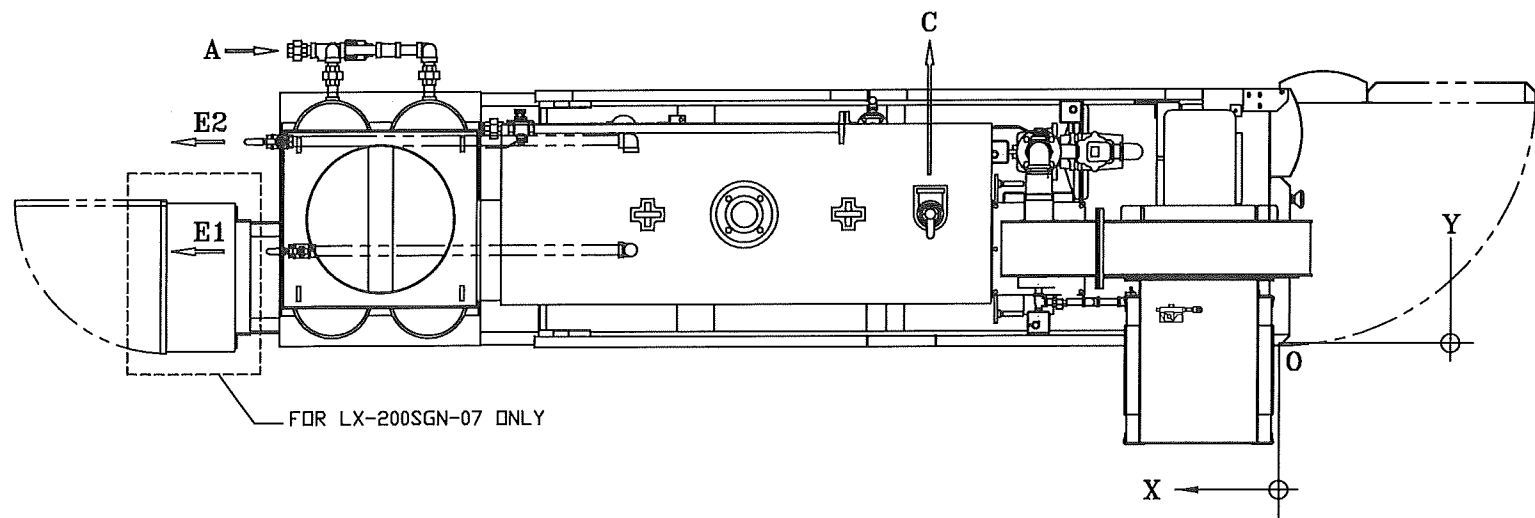
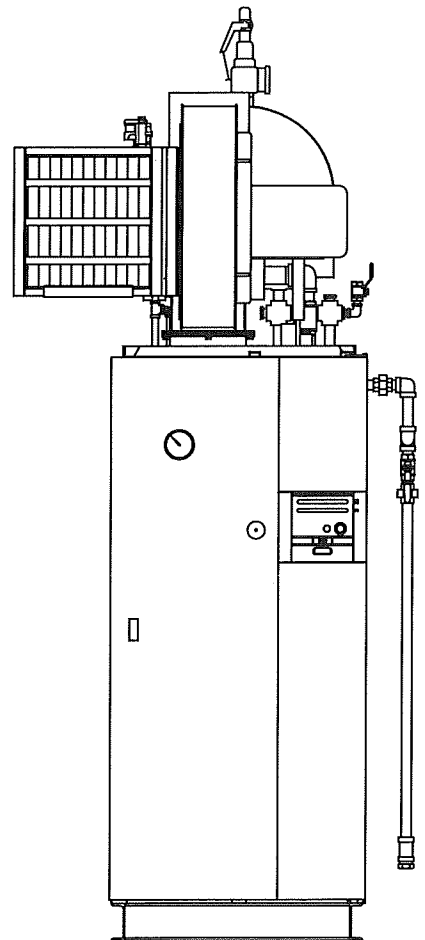
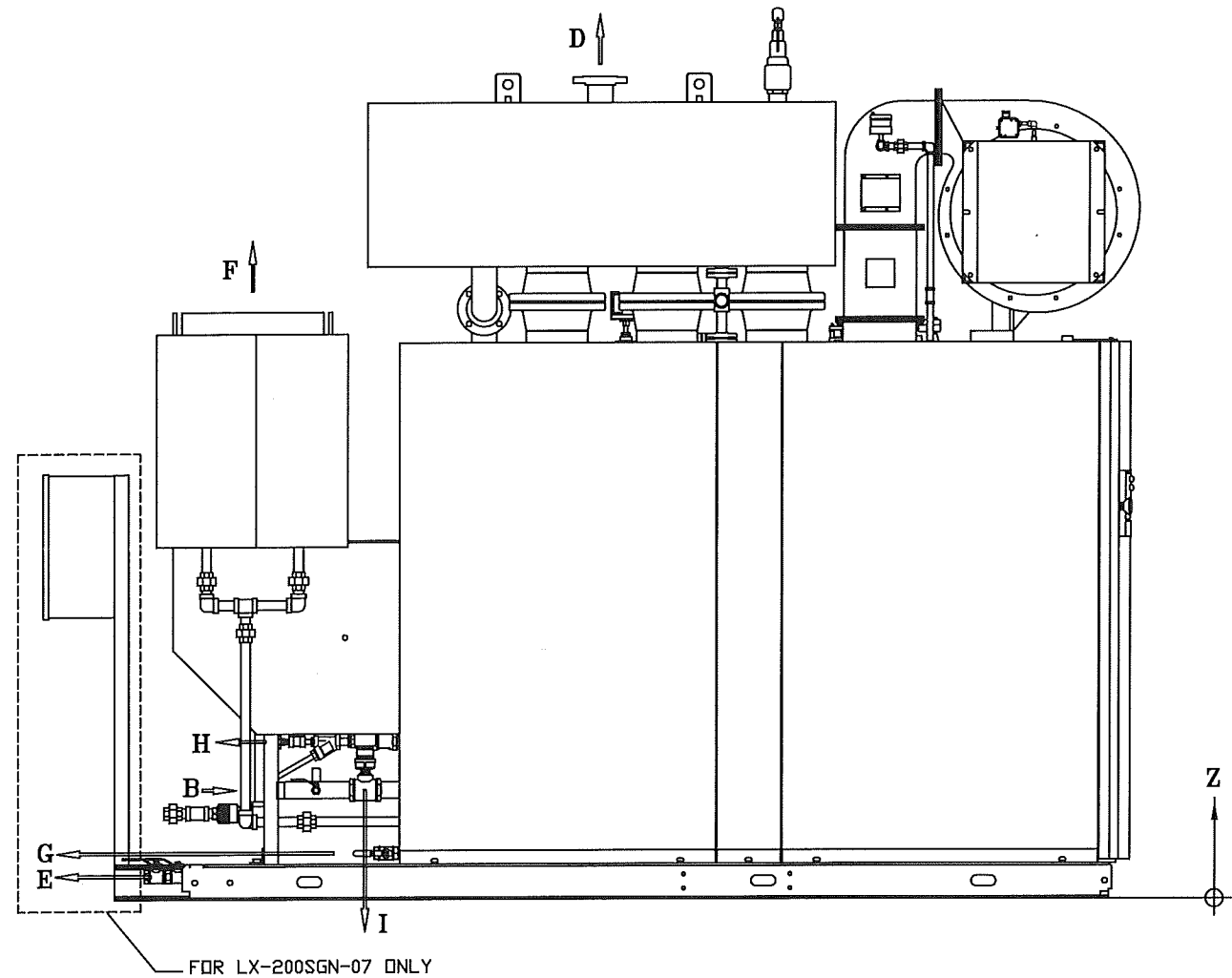


APP. TYPE	QTY
LX-200SG-07	1
LX-200SGN-07	1

- NOTE: 1) THIS DRAWING ILLUSTRATED WITH AN ECONOMIZER.  
 2) DIMENSIONS, SPECIFICATIONS AND SOME PIPINGS ARE SUBJECT TO CHANGE WITHOUT NOTICE.  
 3) GAS VENT PIPING SHALL BE ENFORCED IN ACCORDANCE WITH LOCAL REGULATION.  
 4) E2 DIMENSION APPLIES ONLY FOR LX-200SGN-07 WITH AN INVERTER INSTALLED, OTHERWISE USE E1 DIMENSION.



LEGEND		DIMENSION (INCHES)			
		X	Y	Z	SIZE
A	FEEDWATER INLET	133 5/8	39 3/4	12 1/4	1" NPT
B	SUPPLY GAS INLET	117 5/8	25 3/4	15 1/2	2" NPT
C	MAIN SAFETY VALVE OUTLET	47	20 7/8	116	2 1/2" NPT
D	STEAM OUTLET	72	17 1/2	116	3" FLANGE
E1	BOTTOM BLOW-OFF (WITHOUT INVERTER)	133 3/8	12 3/4	3 3/8	1" NPT
E2	BOTTOM BLOW-OFF (WITH INVERTER)	136 3/8	27 1/2	3 3/8	1" NPT
F	FLUE GAS OUTLET	121	17	82 7/8	ø20"OD DUCT
G	L.V.C. BLOW-OFF	103 3/4	29 1/8	6 1/2	1" NPT
H	SURFACE BLOWDOWN	118 3/8	29 1/8	22 3/8	3/8" NPT
I	ECONOMIZER DRAIN	105	12 3/4	21 3/4	2" NPT
O	BOILER CORNER	0	0	0	-



NO	NAME OF PART	MATERIAL	QTY	REMARKS / DRAWING #
DWN.: KRYSTAL	CK'D.: Yoshi Kamigaki 5/17/2018		SCALE: NTS	DO NOT SCALE
DATE: 05/04/18		APPROVED: Koichi Masuda 5/8/2018	THIRD ANGLE SYSTEM	DIM'N SHOWN ARE INCH
DESCRIPTION: ORIENTATION OF IN & OUTLET			DRAWING NUMBER LX07-0200-0R63	

" CONFIDENTIAL "

THIS MATERIAL IS THE PROPERTY OF MIURA BOILER CO., LTD., AND MUST NOT BE REPRODUCED, PUBLISHED OR DISCLOSED TO OTHERS WITHOUT AUTHORIZATION.

SYM REVISION DATE BY

CAD DWG - NO MANUAL CHANGES PERMITTED

MIURA