

Specification Data

UNILUX

MULTIPASS FLEXIBLE WATERTUBE BOILERS
LOW PRESSURE STEAM BOILERS



**Unilux Advanced
Manufacturing, LLC**

**30 Commerce Park Drive
Niskayuna NY 12309
518.344.7490**

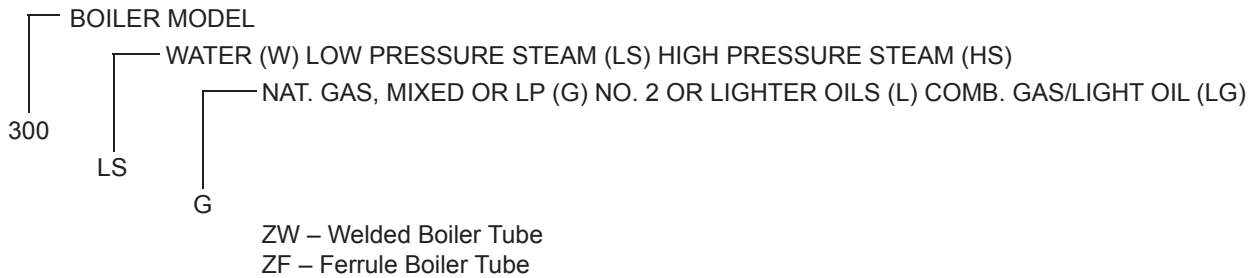
**Fax: (518) 344-7495
E-mail: info@uniluxam.com
Web Site: www.uniluxam.com**

"From commercial comfort to industrial process"

UNILUX "LS" BOILER CAPACITIES:

BOILER MODEL LS	MAXIMUM FUEL INPUT BTU/HR IN THOUSANDS	HEAT OUTPUT AT BOILER OUTPUT BTU/HR IN THOUSANDS	OUTPUT STEAM LBS/HR AT 150 PSIG	APPROX. BOILER HORSE POWER	SHIPPING WEIGHT LBS	OPERATING WEIGHT LBS	OPERATING LEVEL WATER VOLUME U.S. GALLONS
100	1250	1037	1068	31	3910	4380	56
150	1750	1453	1497	43.5	4370	4940	69
200	2200	1826	1880	54.5	5250	5930	82
250	2750	2280	2350	68	5810	6610	97
300	3000	2490	2565	74	6300	7160	103
350	3750	3110	3205	93	6660	7590	112
400	4300	3570	3675	106.5	7235	8270	125
500	5400	4480	4616	134	8780	10190	168.5
600	6250	5187	5345	155	9660	11220	188
700	7235	6005	6185	179	10700	12460	210
800	8270	6864	7070	205	12190	14050	224
900	9300	7719	7950	230	13000	15055	246
1000	10330	8574	8831	256	14200	16445	268.5
1200	12400	10292	10600	307	16500	19155	320
1400	14470	12010	12370	358	17800	20690	348
1600	16530	13720	14131	410	19900	23120	385
1800	18600	15438	15900	461	22600	26645	485
2000	20670	17156	17670	512	25100	29555	535
2500	25000	20750	21372	620	30300	36800	780
2900	29000	24070	24792	719	33400	40800	868
3000	34000	28220	29065	843	47100	57830	1285
3500	38000	31540	32486	942	52520	63790	1350

ORDER NUMBER PROCEDURE: Example – ZF 300LSG



SPECIFICATIONS ARE SUBJECT TO CHANGE WITHOUT NOTICE. DIMENSIONS MUST BE CONFIRMED FOR CONSTRUCTION.

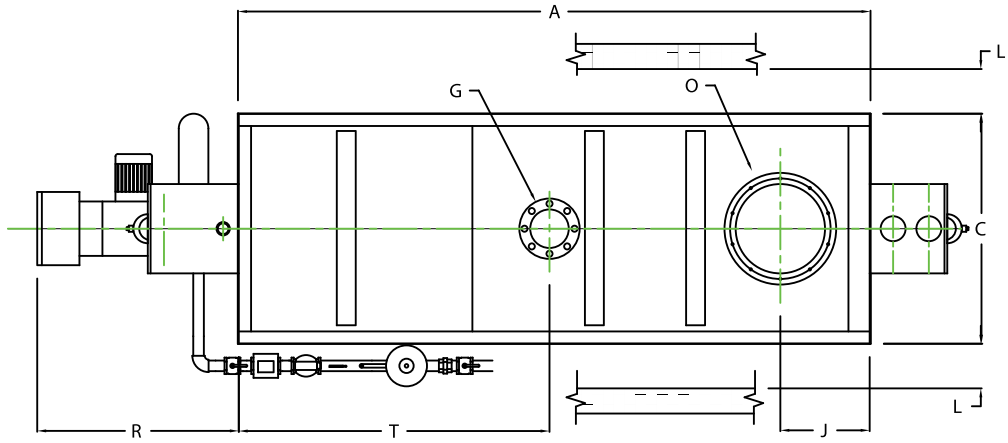
UNILUX REPRESENTATIVE:

STANDARD EQUIPMENT:

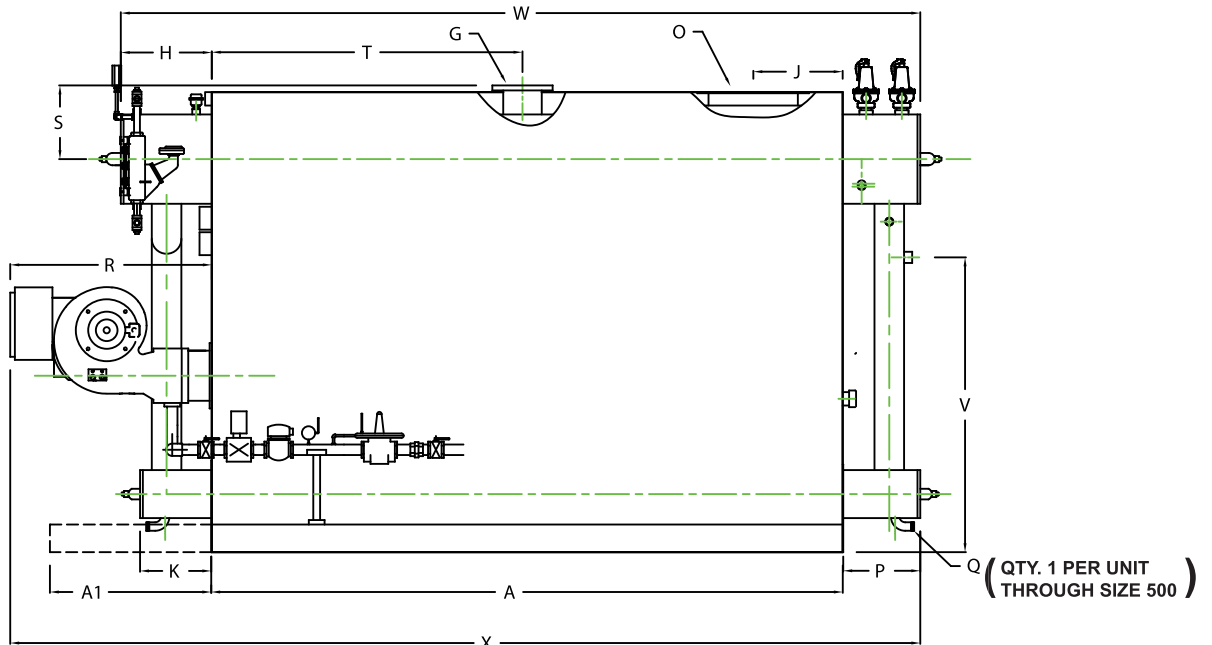
- STEAM PRESSURE GAUGE
- LWCO • RELIEF VALVES • BURNER OPERATING AND SAFETY PRESSURE CONTROLS • FEED WATER PUMP/VALVE CONTROL

ALL BURNER EQUIPMENT UL, CSA APPROVED

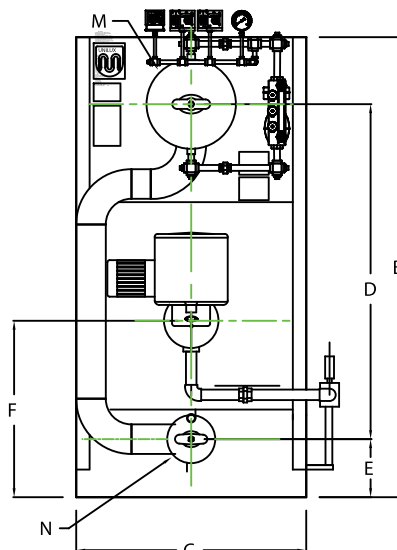




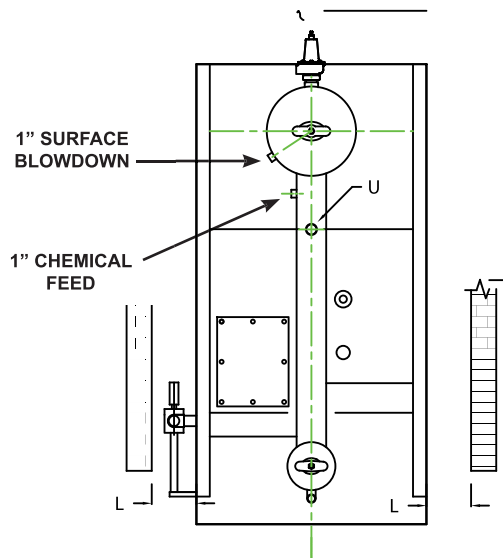
TOP VIEW



SIDE VIEW



FRONT VIEW



REAR VIEW

LOW PRESSURE STEAM BOILER

DIMENSIONS

	BOILER MODEL-LS	100	150	200	250	300	350	400	500	600	700	800
A	LENGTH OF BASE	51 1/4	63 1/4	63 1/4	72 1/4	72 1/4	78 1/4	87 1/4	99 1/4	111 1/4	120 1/2	120 5/8
A1	LENGTH OF SUPPORT FROM BASE	-	-	-	-	-	-	-	-	-	-	-
B	HEIGHT	76 9/16	76 9/16	83 9/16	83 9/16	88 9/16	88 9/16	88 9/16	92 13/16	92 13/16	95 13/16	102 13/16
C	WIDTH OF BASE	35 1/2	35 1/2	39 1/2	39 1/2	43 1/2	43 1/2	43 1/2	45 1/2	45 1/2	47 1/2	51 1/2
D	CTR. LOWER DRUM TO CTR. UPPER DRUM	54	54	59	59	64	64	64	67	67	70	75
E	CENTER OF LOWER DRUM TO BOTTOM	9 9/16	9 9/16	9 9/16	9 9/16	9 9/16	9 9/16	9 9/16	10 13/16	10 13/16	10 13/16	12 13/16
F	CENTER OF BURNER OPENING TO BOTTOM	25 7/8	25 7/8	27 7/8	27 7/8	29 3/8	29 3/8	29 3/8	33	33	34 5/16	38 5/16
G	OUTLET FLANGE, NPS, CLASS 150	2	2 1/2	3	3	3	4	4	4	6	6	6
H	DRUM CLEARANCE FROM TOP, FRONT	19 7/32	19 3/8	19 3/8	19 3/8	19 3/8	19 3/8	19 7/8	20 3/8	20 3/8	20 3/8	20 3/8
J	CENTER OF FLUE GAS OUTLET TO REAR	14	14	15	15	16	16	17	17	18	19	19
K	DRUM CLEARANCE FROM BASE, FRONT	13 3/4	13 3/4	13 3/4	14 1/4	14 1/4	14 1/4	14 1/4	15 9/32	15 9/32	15 9/32	15 9/32
L	TUBE REMOVAL CLEARANCE FROM BASE	18	18	22	22	26	26	26	28	28	30	34
M	UPPER DRUM O.D., NPS	16	16	20	20	20	20	20	20	20	20	20
N	LOWER DRUM O.D., NPS	8 5/8	8 5/8	8 5/8	8 5/8	8 5/8	8 5/8	8 5/8	10 3/4	10 3/4	10 3/4	10 3/4
O	FLUE GAS OUTLET, I.D.	8	8	10	10	12	12	14	14	16	18	18
P	DRUM CLEARANCE FROM BASE, REAR	13	13	13	14	14	14	14	15	15	16 1/8	16 1/8
Q	BLOWDOWN, NPT	1 1/2	1 1/2	1 1/2	1 1/2	1 1/2	1 1/2	1 1/2	1 1/2	1 1/2	1 1/2	1 1/2
R	BURNER DIMENSION	34	34	34	38	38	38	38	38	38	46	46
S	CTR. OF UPPER DRUM TO TOP OF OUT LET	14 1/2	14 1/2	16 1/2	16 1/2	16 1/2	16 1/2	16 1/2	16 1/2	16 1/2	16 1/2	16 1/2
T	CTR. OF OUTLET TO ENCLOSURE FRONT	24 7/16	30 1/2	30 1/2	35 1/16	35 1/16	38 1/16	42 9/16	48 5/8	54 5/8	59 3/16	59 3/16
U	INLET, 3000 PSI ASA HALF COUPLING	1	1	1 1/4	1 1/4	1 1/4	1 1/4	1 1/4	1 1/2	1 1/2	1 1/2	1 1/2
V	FEED WATER INLET FROM BASE	43 9/16	43 9/16	46 9/16	46 9/16	51 9/16	51 9/16	51 9/16	55 9/16	55 9/16	58 13/16	65 13/16
W	OVERALL BOILER LENGTH	83 15/32	95 5/8	95 5/8	105 5/8	105 5/8	111 5/8	121 1/8	134 5/8	146 5/8	157	157 1/8
X	OVERALL BOILER LENGTH WITH BURNER	98 1/4	110 1/4	110 1/4	124 1/4	124 1/4	130 1/4	139 1/4	152 1/4	164 1/4	182 5/8	182 3/4

	BOILER MODEL-LS	900	1000	1200	1400	1600	1800	2000	2500	2900	3000	3500
A	LENGTH OF BASE	129 5/8	141 5/8	159 7/8	174 7/8	186 7/8	186 7/8	195 7/8	203 31/32	219 1/8	237 7/8	266
A1	LENGTH OF SUPPORT FROM BASE	-	-	-	-	-	-	-	-	-	TBA	TBA
B	HEIGHT	102 13/16	102 13/16	106 13/16	106 13/16	106 13/16	115 5/16	115 5/16	136 13/16	142 13/16	158 3/8	167 3/8
C	WIDTH OF BASE	51 1/2	51 1/2	55 1/2	55 1/2	59 1/2	65 1/2	71 1/2	84	84	102	102
D	CTR. LOWER DRUM TO CTR. UPPER DRUM	75	75	79	79	79	84 1/2	84 1/2	102	108	118	127
E	CENTER OF LOWER DRUM TO BOTTOM	12 13/16	12 13/16	12 13/16	12 13/16	12 13/16	13 13/16	13 13/16	13 13/16	13 13/16	17 3/8	17 3/8
F	CENTER OF BURNER OPENING TO BOTTOM	38 5/16	38 5/16	40 5/16	40 5/16	40 5/16	42 5/8	42 5/8	50 3/8	52 5/8	58 3/8	60 3/8
G	OUTLET FLANGE, NPS, CLASS 150	6	8	8	8	8	10	10	10	10	12	12
H	DRUM CLEARANCE FROM TOP, FRONT	20 3/8	20 3/8	20 3/8	20 3/8	20 3/8	21 7/8	21 7/8	26	26	26 1/2	26 1/2
J	CENTER OF FLUE GAS OUTLET TO REAR	20	20	21	22	23	23	23	28	30	28	29
K	DRUM CLEARANCE FROM BASE, FRONT	15 13/16	15 13/16	15 13/16	15 13/16	15 4/5	21 1/8	21 1/8	23	23	25 7/8	25 7/8
L	TUBE REMOVAL CLEARANCE FROM BASE	34	34	38	38	42	48	54	70	70	76	76
M	UPPER DRUM O.D., NPS	20	20	20	20	20	24	24	26	26	32	32
N	LOWER DRUM O.D., NPS	10 3/4	10 3/4	10 3/4	10 3/4	10 3/4	12 3/4	12 3/4	12 3/4	12 3/4	16	16
O	FLUE GAS OUTLET, I.D.	20	20	22	24	24	26	26	28	30	30	32
P	DRUM CLEARANCE FROM BASE, REAR	16 1/8	17 1/8	17 1/8	16 1/8	16 1/8	18 1/8	18 1/8	22 1/8	22 1/8	22 3/8	22 3/8
Q	BLOWDOWN, NPT	1 1/2	1 1/2	2	2	2	2	2	2	2	2	2
R	BURNER DIMENSION	46	46	46	46	46	46	46	46	46	46	46
S	CTR. OF UPPER DRUM TO TOP OF OUT LET	16 1/2	16 1/2	16 1/2	16 1/2	16 1/2	18 1/2	18 1/2	23 1/4	23 1/4	24 1/2	24 1/2
T	CTR. OF OUTLET TO ENCLOSURE FRONT	63 11/16	69 11/16	78 3/4	86 5/16	92 5/16	92 5/16	96 7/8	101	108 5/8	117 11/16	131 3/4
U	INLET, 3000 PSI ASA HALF COUPLING	1 1/2	2	2	2	2	2 1/2	2 1/2	3	3	3	3
V	FEED WATER INLET FROM BASE	65 13/16	65 13/16	69 13/16	69 13/16	69 13/16	74 5/16	74 5/16	90 13/16	96 13/16	107 3/8	116 3/8
W	OVERALL BOILER LENGTH	166 1/8	179 1/8	197 3/8	211 3/8	223 3/8	226 7/8	235 7/8	252 3/32	267 1/4	286 3/4	314 7/8
X	OVERALL BOILER LENGTH WITH BURNER	191 3/4	204 3/4	223	237	249	251	260	272 3/32	287 1/4	306 1/4	334 3/8

Note: Burner dimension "R" is based upon approximate lengths of combustion equipment.
Actual dimensions for "R" and "X" may vary accordingly.

ALL
DIMENSIONS
SHOWN IN
INCHES

Note: Dimensions subject to change without notice.
Consult factory for certified dimensions.



The Ultimate Heat