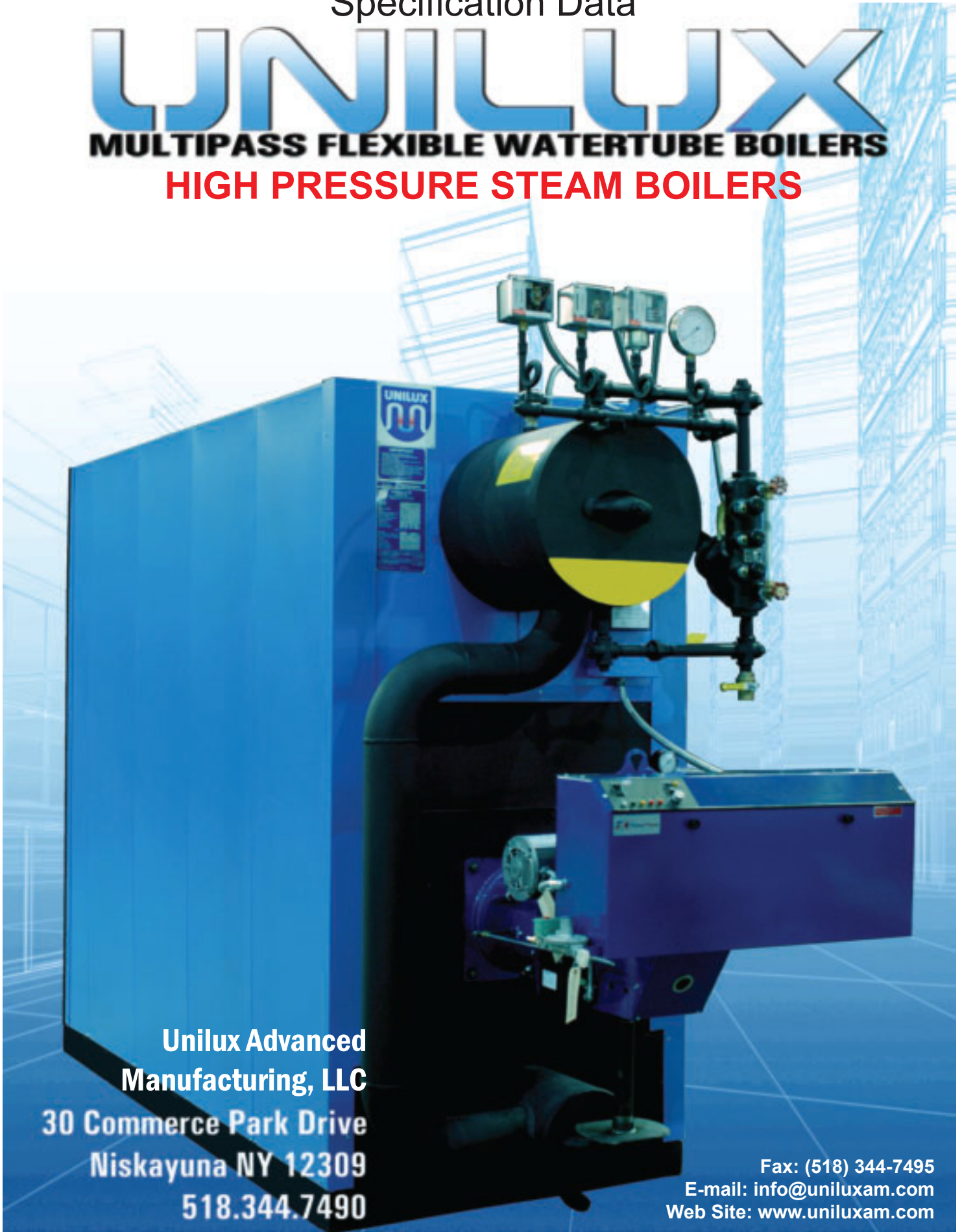


Specification Data

UNILUX

MULTIPASS FLEXIBLE WATERTUBE BOILERS
HIGH PRESSURE STEAM BOILERS



**Unilux Advanced
Manufacturing, LLC**

**30 Commerce Park Drive
Niskayuna NY 12309
518.344.7490**

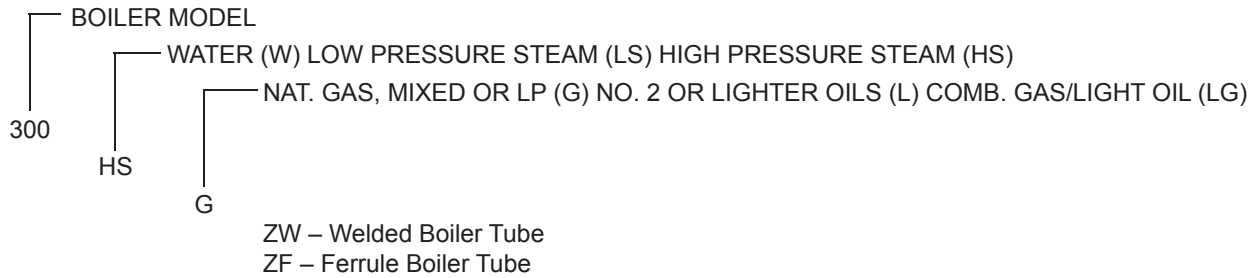
**Fax: (518) 344-7495
E-mail: info@uniluxam.com
Web Site: www.uniluxam.com**

"From commercial comfort to industrial process"

UNILUX "HS" BOILER CAPACITIES:

| BOILER MODEL HS | MAXIMUM FUEL INPUT BTU/HR IN THOUSANDS | HEAT OUTPUT AT BOILER OUTPUT BTU/HR IN THOUSANDS | OUTPUT STEAM LBS/HR AT 150 PSIG | APPROX. BOILER HORSE POWER | SHIPPING WEIGHT LBS | OPERATING WEIGHT LBS | OPERATING LEVEL WATER VOLUME U.S. GALLONS |
|-----------------|--|--|---------------------------------|----------------------------|---------------------|----------------------|---|
| 100 | 1250 | 1013 | 1000 | 30.5 | 4170 | 4640 | 56 |
| 150 | 1750 | 1418 | 1400 | 42.5 | 4665 | 5235 | 69 |
| 200 | 2200 | 1782 | 1760 | 53 | 5530 | 6210 | 82 |
| 250 | 2750 | 2228 | 2200 | 66.5 | 6200 | 7000 | 97 |
| 300 | 3000 | 2430 | 2400 | 72.5 | 6700 | 7560 | 103 |
| 350 | 3750 | 3038 | 3000 | 91 | 7090 | 8020 | 112 |
| 400 | 4300 | 3463 | 3440 | 104 | 7700 | 8735 | 125 |
| 500 | 5400 | 4374 | 4320 | 130.5 | 9300 | 10710 | 168.5 |
| 600 | 6250 | 5063 | 5000 | 151 | 10200 | 11760 | 188 |
| 700 | 7235 | 5860 | 5787 | 175 | 11280 | 13040 | 210 |
| 800 | 8270 | 6699 | 6615 | 200 | 12785 | 14645 | 224 |
| 900 | 9300 | 7533 | 7439 | 225 | 13600 | 15655 | 246 |
| 1000 | 10330 | 8367 | 8262 | 250 | 14850 | 17095 | 268.5 |
| 1200 | 12400 | 10044 | 9918 | 300 | 17250 | 19905 | 320 |
| 1400 | 14470 | 11720 | 11574 | 350 | 18590 | 21480 | 348 |
| 1600 | 16530 | 13390 | 13220 | 400 | 20720 | 23940 | 385 |
| 1800 | 18600 | 15066 | 14878 | 450 | 23500 | 27545 | 485 |
| 2000 | 20670 | 16743 | 16533 | 500 | 26100 | 30555 | 535 |
| 2500 | 25000 | 20250 | 19997 | 605 | 31800 | 38300 | 780 |
| 2900 | 29000 | 23490 | 23196 | 702 | 34900 | 42300 | 888 |
| 3000 | 34000 | 27540 | 27194 | 823 | 49050 | 59780 | 1285 |
| 3500 | 38000 | 30780 | 30395 | 919.5 | 55000 | 66270 | 1350 |

ORDER NUMBER PROCEDURE: Example – ZF 300HSG



SPECIFICATIONS ARE SUBJECT TO CHANGE WITHOUT NOTICE. DIMENSIONS MUST BE CONFIRMED FOR CONSTRUCTION.

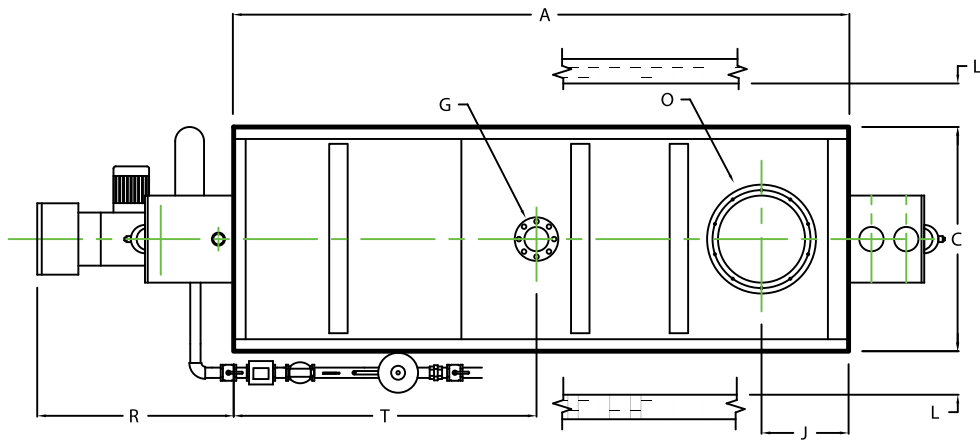
STANDARD EQUIPMENT:

- STEAM PRESSURE GAUGE
- LWCO • RELIEF VALVES • BURNER OPERATING AND SAFETY PRESSURE CONTROLS • FEED WATER PUMP/VALVE CONTROL

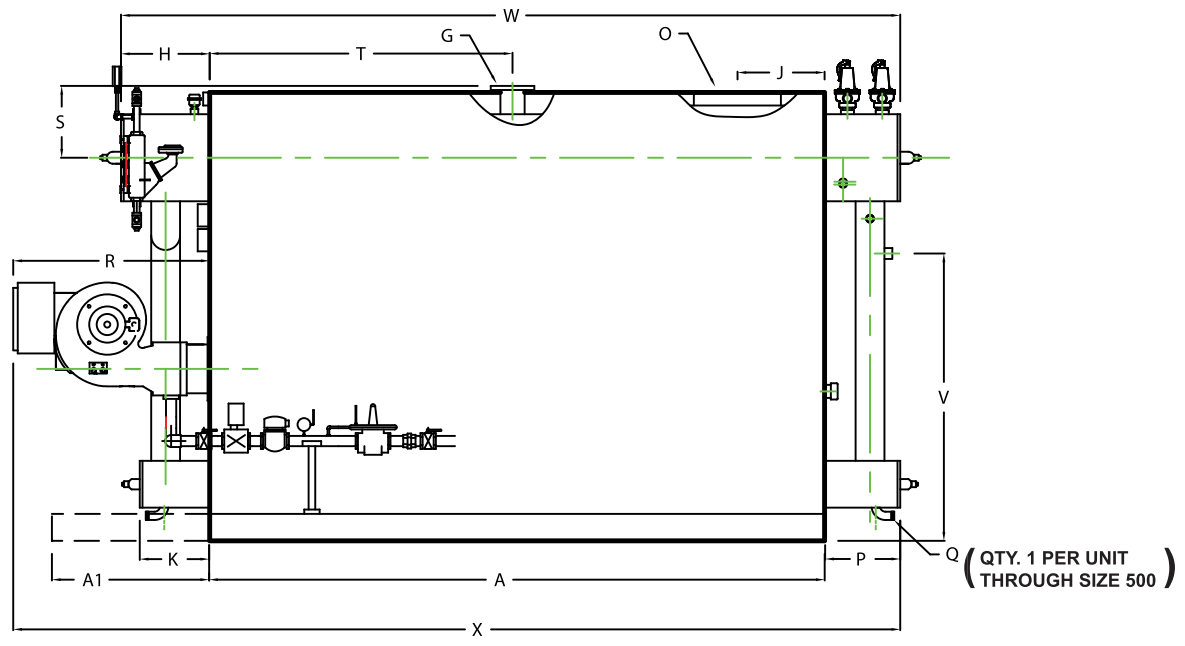
UNILUX REPRESENTATIVE:

ALL BURNER EQUIPMENT UL, CSA APPROVED

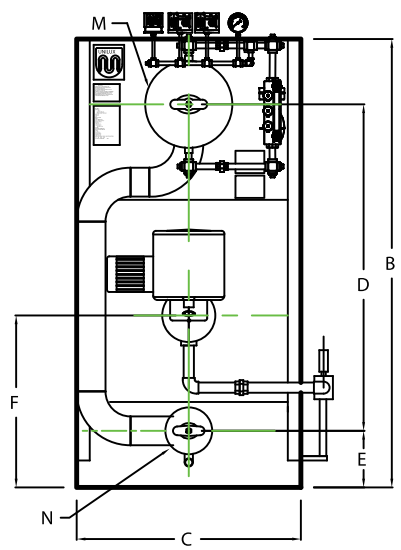




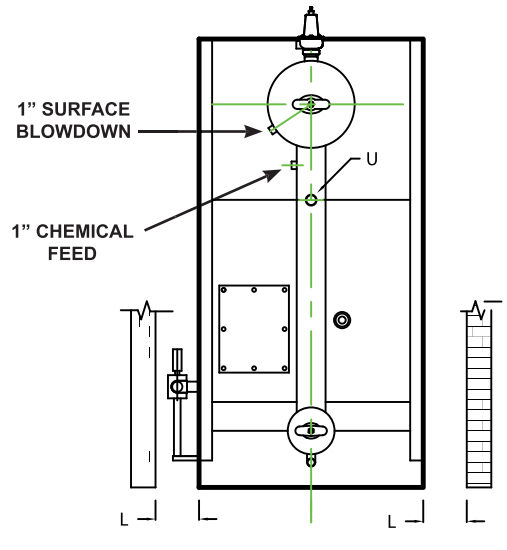
TOP VIEW



SIDE VIEW



FRONT VIEW



REAR VIEW

HIGH PRESSURE STEAM BOILER

DIMENSIONS

| | BOILER MODEL-HS | 100 | 150 | 200 | 250 | 300 | 350 | 400 | 500 | 600 | 700 | 800 |
|----|--------------------------------------|----------|---------|---------|---------|---------|---------|---------|----------|----------|----------|-----------|
| A | LENGTH OF BASE | 51 1/4 | 63 1/4 | 63 1/4 | 72 1/4 | 72 1/4 | 78 1/4 | 87 1/4 | 99 1/4 | 111 1/4 | 120 1/2 | 120 5/8 |
| A1 | LENGTH OF SUPPORT FROM BASE | - | - | - | - | - | - | - | - | - | - | - |
| B | HEIGHT | 76 9/16 | 76 9/16 | 83 9/16 | 83 9/16 | 88 9/16 | 88 9/16 | 88 9/16 | 92 13/16 | 92 13/16 | 95 13/16 | 102 13/16 |
| C | WIDTH OF BASE | 35 1/2 | 35 1/2 | 39 1/2 | 39 1/2 | 43 1/2 | 43 1/2 | 43 1/2 | 45 1/2 | 45 1/2 | 47 1/2 | 51 1/2 |
| D | CTR. LOWER DRUM TO CTR. UPPER DRUM | 54 | 54 | 59 | 59 | 64 | 64 | 64 | 67 | 67 | 70 | 75 |
| E | CENTER OF LOWER DRUM TO BOTTOM | 9 9/16 | 9 9/16 | 9 9/16 | 9 9/16 | 9 9/16 | 9 9/16 | 9 9/16 | 10 13/16 | 10 13/16 | 10 13/16 | 12 13/16 |
| F | CENTER OF BURNER OPENING TO BOTTOM | 25 7/8 | 25 7/8 | 27 7/8 | 27 7/8 | 29 3/8 | 29 3/8 | 29 3/8 | 33 | 33 | 34 5/16 | 38 5/16 |
| G | OUTLET FLANGE, NPS, CLASS 300 | 1 1/2 | 2 | 2 1/2 | 2 1/2 | 3 | 3 | 3 | 3 | 4 | 4 | 4 |
| H | DRUM CLEARANCE FROM TOP, FRONT | 19 9/16 | 19 5/8 | 19 7/8 | 19 1/2 | 19 1/2 | 19 7/8 | 20 3/8 | 20 7/8 | 20 7/8 | 20 7/8 | 20 7/8 |
| J | CENTER OF FLUE GAS OUTLET TO REAR | 14 | 14 | 15 | 15 | 16 | 16 | 17 | 17 | 18 | 19 | 19 |
| K | DRUM CLEARANCE FROM BASE, FRONT | 13 3/4 | 13 3/4 | 13 3/4 | 14 1/4 | 14 1/4 | 14 1/4 | 14 1/4 | 15 1/2 | 15 1/2 | 15 1/2 | 15 1/2 |
| L | TUBE REMOVAL CLEARANCE FROM BASE | 18 | 18 | 22 | 22 | 26 | 26 | 26 | 28 | 28 | 30 | 34 |
| M | UPPER DRUM O.D., NPS | 16 | 16 | 20 | 20 | 20 | 20 | 20 | 20 | 20 | 20 | 20 |
| N | LOWER DRUM O.D., NPS | 8 5/8 | 8 5/8 | 8 5/8 | 8 5/8 | 8 5/8 | 8 5/8 | 8 5/8 | 10 3/4 | 10 3/4 | 10 3/4 | 10 3/4 |
| O | FLUE GAS OUTLET, I.D. | 8 | 8 | 10 | 10 | 12 | 12 | 14 | 14 | 16 | 18 | 18 |
| P | DRUM CLEARANCE FROM BASE, REAR | 13 | 13 | 13 | 14 | 14 | 14 | 14 | 15 5/16 | 15 5/16 | 16 3/8 | 16 3/8 |
| Q | BLOWDOWN, NPT | 1 1/2 | 1 1/2 | 1 1/2 | 1 1/2 | 1 1/2 | 1 1/2 | 1 1/2 | 1 1/2 | 1 1/2 | 1 1/2 | 1 1/2 |
| R | BURNER DIMENSION (EST) | 34 | 34 | 34 | 38 | 38 | 38 | 38 | 38 | 38 | 46 | 46 |
| S | CTR. OF UPPER DRUM TO TOP OF OUT LET | 14 1/2 | 14 1/2 | 16 1/2 | 16 1/2 | 16 1/2 | 16 1/2 | 16 1/2 | 16 1/2 | 16 1/2 | 16 1/2 | 16 1/2 |
| T | CTR. OF OUTLET TO ENCLOSURE FRONT | 24 7/16 | 30 1/2 | 30 1/2 | 35 1/16 | 35 1/16 | 38 1/16 | 42 9/16 | 45 5/8 | 54 5/8 | 59 3/16 | 59 3/16 |
| U | INLET, 3000 PSI ASA HALF COUPLING | 1 | 1 | 1 | 1 1/4 | 1 1/4 | 1 1/4 | 1 1/4 | 1 1/4 | 1 1/4 | 1 1/4 | 1 1/2 |
| V | FEED WATER INLET FROM BASE | 43 9/16 | 43 9/16 | 46 9/16 | 46 9/16 | 51 9/16 | 51 9/16 | 51 9/16 | 55 9/16 | 55 9/16 | 58 13/16 | 65 13/16 |
| W | OVERALL BOILER LENGTH | 83 13/16 | 95 7/8 | 96 1/8 | 105 3/4 | 105 3/4 | 112 1/8 | 121 5/8 | 135 7/16 | 147 7/16 | 157 3/4 | 157 7/8 |
| X | OVERALL BOILER LENGTH WITH BURNER | 98 1/4 | 110 1/4 | 110 1/4 | 124 1/4 | 124 1/4 | 130 1/4 | 139 1/4 | 152 9/16 | 164 9/16 | 182 7/8 | 183 |

| | BOILER MODEL-HS | 900 | 1000 | 1200 | 1400 | 1600 | 1800 | 2000 | 2500 | 2900 | 3000 | 3500 |
|----|--------------------------------------|-----------|-----------|-----------|-----------|-----------|----------|----------|-----------|-----------|-----------|---------|
| A | LENGTH OF BASE | 129 5/8 | 141 5/8 | 159 5/8 | 174 7/8 | 186 7/8 | 186 3/4 | 195 7/8 | 203 31/32 | 219 1/8 | 237 7/8 | 266 |
| A1 | LENGTH OF SUPPORT FROM BASE | - | - | - | - | - | - | - | - | - | TBA | TBA |
| B | HEIGHT | 102 13/16 | 102 13/16 | 106 13/16 | 106 13/16 | 106 13/16 | 115 5/16 | 115 5/16 | 136 13/16 | 142 13/16 | 158 3/8 | 167 3/8 |
| C | WIDTH OF BASE | 51 1/2 | 51 1/2 | 55 1/2 | 55 1/2 | 59 1/2 | 65 1/2 | 71 1/2 | 84 | 84 | 102 | 102 |
| D | CTR. LOWER DRUM TO CTR. UPPER DRUM | 75 | 75 | 79 | 79 | 79 | 84 1/2 | 84 1/2 | 102 | 108 | 118 | 127 |
| E | CENTER OF LOWER DRUM TO BOTTOM | 12 13/16 | 12 13/16 | 12 13/16 | 12 13/16 | 12 13/16 | 13 13/16 | 13 13/16 | 13 13/16 | 13 13/16 | 17 3/8 | 17 3/8 |
| F | CENTER OF BURNER OPENING TO BOTTOM | 38 5/16 | 38 5/16 | 40 5/16 | 40 5/16 | 40 5/16 | 42 5/8 | 42 5/8 | 50 3/8 | 52 5/8 | 58 3/8 | 60 3/8 |
| G | OUTLET FLANGE, NPS, CLASS 300 | 4 | 6 | 6 | 6 | 6 | 6 | 8 | 8 | 8 | 8 | 8 |
| H | DRUM CLEARANCE FROM TOP, FRONT | 20 7/8 | 20 7/8 | 20 7/8 | 20 7/8 | 20 7/8 | 22 1/8 | 22 1/8 | 26 | 26 | 27 1/2 | 27 1/2 |
| J | CENTER OF FLUE GAS OUTLET TO REAR | 20 | 20 | 21 | 22 | 23 | 23 | 23 | 28 | 30 | 28 | 29 |
| K | DRUM CLEARANCE FROM BASE, FRONT | 16 | 16 | 16 | 16 | 16 | 21 3/8 | 21 3/8 | 22 1/8 | 22 1/8 | 26 1/2 | 26 1/2 |
| L | TUBE REMOVAL CLEARANCE FROM BASE | 34 | 34 | 38 | 38 | 42 | 48 | 54 | 70 | 70 | 76 | 76 |
| M | UPPER DRUM O.D., NPS | 20 | 20 | 20 | 20 | 20 | 24 | 24 | 26 | 26 | 32 | 32 |
| N | LOWER DRUM O.D., NPS | 10 3/4 | 10 3/4 | 10 3/4 | 10 3/4 | 10 3/4 | 12 3/4 | 12 3/4 | 12 3/4 | 12 3/4 | 16 | 16 |
| O | FLUE GAS OUTLET, I.D. | 20 | 20 | 22 | 24 | 24 | 26 | 26 | 28 | 30 | 30 | 32 |
| P | DRUM CLEARANCE FROM BASE, REAR | 16 3/8 | 17 3/8 | 17 3/8 | 16 3/8 | 16 3/8 | 18 3/8 | 18 3/8 | 22 1/8 | 22 1/8 | 23 | 23 |
| Q | BLOWDOWN, NPT | 1 1/2 | 1 1/2 | 2 | 2 | 2 | 2 | 2 | 2 | 2 | 2 | 2 |
| R | BURNER DIMENSION (EST) | 46 | 46 | 46 | 46 | 46 | 46 | 46 | 46 | 46 | 46 | 46 |
| S | CTR. OF UPPER DRUM TO TOP OF OUT LET | 16 1/2 | 16 1/2 | 16 1/2 | 16 1/2 | 16 1/2 | 18 1/2 | 18 1/2 | 23 1/4 | 23 1/4 | 24 1/2 | 24 1/2 |
| T | CTR. OF OUTLET TO ENCLOSURE FRONT | 63 11/16 | 69 11/16 | 78 3/4 | 86 5/16 | 92 5/16 | 92 5/16 | 96 7/8 | 101 | 108 5/8 | 117 11/16 | 131 3/4 |
| U | INLET, 3000 PSI ASA HALF COUPLING | 1 1/2 | 1 1/2 | 2 | 2 | 2 | 2 | 2 | 3 | 3 | 3 | 3 |
| V | FEED WATER INLET FROM BASE | 65 13/16 | 65 13/16 | 69 13/16 | 69 13/16 | 69 13/16 | 74 5/16 | 74 5/16 | 90 13/16 | 96 13/16 | 107 3/8 | 116 3/8 |
| W | OVERALL BOILER LENGTH | 166 7/8 | 179 7/8 | 197 7/8 | 212 1/8 | 224 1/8 | 227 1/4 | 236 3/8 | 252 3/32 | 267 1/4 | 288 3/8 | 316 1/2 |
| X | OVERALL BOILER LENGTH WITH BURNER | 192 | 205 | 223 | 237 1/4 | 249 1/4 | 251 1/8 | 260 1/4 | 272 3/32 | 287 1/4 | 306 7/8 | 335 |

*RECOMMENDED CLEARANCE

Note: Burner dimension "R" is based upon approximate lengths of combustion equipment. Actual dimensions for "R" and "X" may vary accordingly.

ALL DIMENSIONS SHOWN IN INCHES

Note: Dimensions subject to change without notice. Consult factory for certified dimensions.



The Ultimate Heat