



BURNERS



FLARES



THERMAL OXIDIZERS



PARTS & SERVICE



GB-ZS/ZR™ PACKAGE BURNER



Zeeco Corporate Headquarters
 22151 East 91st Street
 Broken Arrow, Oklahoma 74014 USA
 Phone: +1 918 258 8551 Fax: +1 918 251 5519
 E-mail: sales@zeeco.com

Zeeco.com



ZEECO® combustion and environmental solutions are designed and manufactured to comply with applicable local and international standards as defined by our customers.



REGISTERED
 ISO 9001: 2008

CERTIFICATIONS APPLY TO ZEECO HEADQUARTERS.

ZEECO® is a registered trademark of Zeeco, Inc. in the U.S.

● ZEECO office, affiliate, sales, representative, or third party representative/licensee offices.

© 2016 COPYRIGHT ZEECO, INC. ALL RIGHTS RESERVED

16-rev 2

BURNERS

FLARES

INCINERATORS

PARTS & SERVICE

GB-ZS/ZR Package Burner

GB-ZS

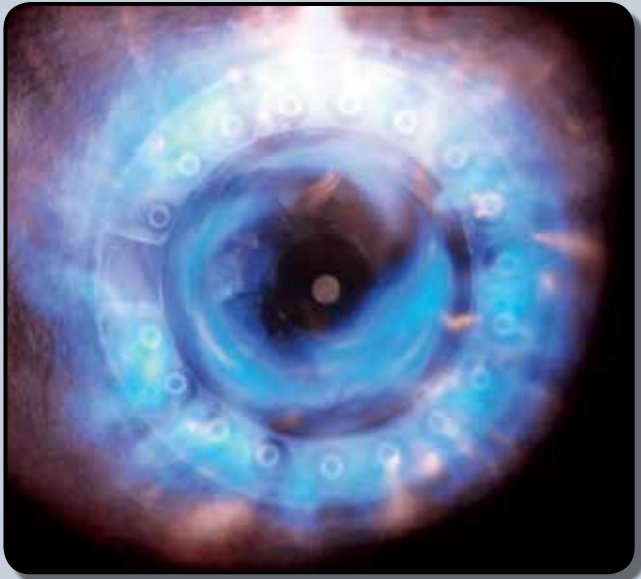


GB-ZR



GB-ZS/ZR Package Burner.

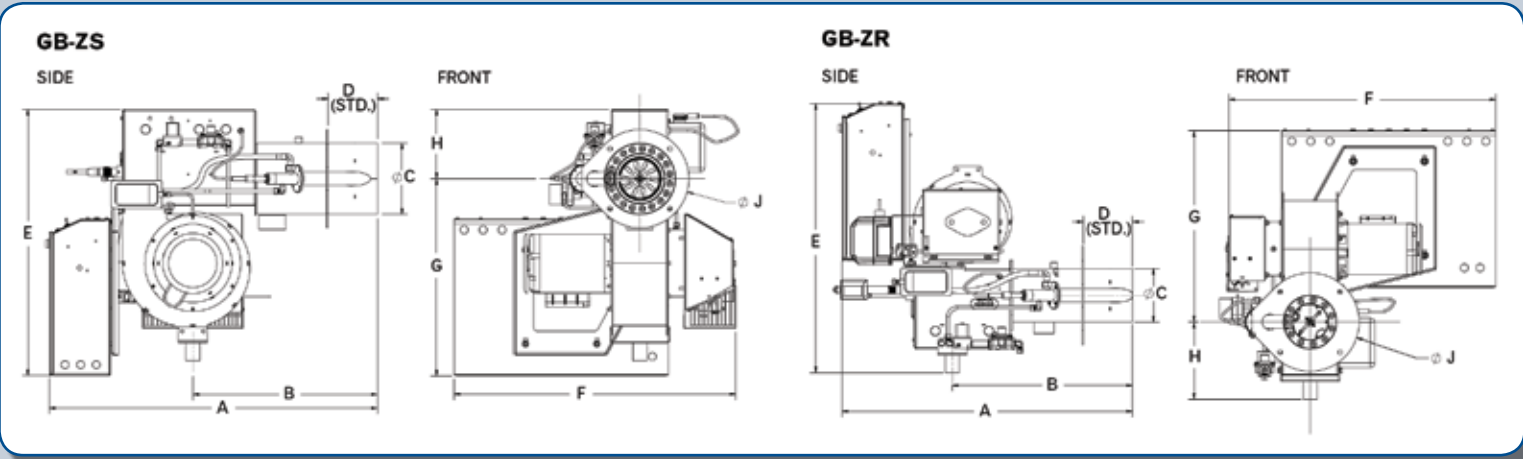
As The GB-Z Package Burner line provides reliable, efficient, proven performance for your heating needs. Model GB-Z burners will fire natural gas, propane, or other gaseous fuels. The burner head features a nozzle mix combustor for a reliable, robust flame pattern. GB-Z burners are suitable for commercial and industrial firetube and watertube boilers, firebox boilers, thermal fluid heaters and other various process heaters. The GB-Z burner delivers the engineering technology that can only come from the global authority in combustion and environmental solutions - Zeeco.



Standard Equipment:

- 3450 RPM motor
 - Gas electric pilot with transformer
 - Burner mounted or remote control panel with signal lights (Power On, Call for Heat, Main Fuel, Pilot Fuel, Alarm)
 - Combustion air proving switch
 - Motor starter
 - 120/1/60 control circuit with transformer
- Butterfly gas control valve
 - High/low gas pressure switches
 - Gas shutoff cocks
 - Main gas regulator
 - Ship loose gas train

Additional Equipment	GB-Z6	GB-Z8	GB-Z8	GB-Z10	GB-Z12	GB-Z12
X-Standard 0-Optional	.0, .1, .2, .3, .4	.0, .1	.2, .3, .4	.0, .1, .2, .3	.0, .1	.2, .3
Flame Safeguard with UV Scanner	X	X	X	X	X	X
Up to 4:1 Turndown on Natural Gas	X	X	X	X	X	X
On-Off with Manual Fixed Air Control	X	X				
Low-Hi-Off with Motorized Gas Valve	0	0	X	X	X	
Full Modulation with Automatic Air Control	0	0	0	0	0	X
Dry Oven and Gasket	0	0	0	0	0	0



Capacity																			
Model	A (ZS)	A (ZR)	B (ZS)	B (ZR)	C	D	E (ZS)	E (ZR)	F	G (ZS)	G (ZR)	H (ZS)	H (ZR)	J	MBH, Max	BHP, Max	Blower Motor HP	Std. Gas Train Size (in)	Required Nat. Gas Pressure (in WC)
Z6.0	32.63	32.5	18.5	20.25	6	5.5	28	30	30	22	24.5	6	8.65	11	839	20.0	0.33	1.25	6.25
Z6.1	32.63	32.5	18.5	20.25	6	5.5	28	30	30	22	24.5	6	8.65	11	989	23.6	0.33	1.25	7.25
Z6.2	32.63	32.5	18.5	20.25	6	5.5	28	30	30	22	24.5	6	8.65	11	1119	26.6	0.33	1.25	7.25
Z6.3	32.63	32.5	18.5	20.25	6	5.5	28	30	30	22	24.5	6	8.65	11	1189	28.3	0.5	1.5	7.34
Z6.4	32.63	32.5	18.5	20.25	6	5.5	28	30	30	22	24.5	6	8.65	11	1959	46.7	0.5	1.5	7.5
Z8.0	36.75	36.5	24.63	24.25	8	5.5	29.75	31.25	31.5	22	21.25	7.75	10	11	2099	50.0	0.5	1.5	7.75
Z8.1	36.75	36.5	24.63	24.25	8	5.5	29.75	31.25	31.5	22	21.25	7.75	10	11	2249	53.6	0.75	1.5	8.25
Z8.2	36.75	36.5	24.63	24.25	8	5.5	29.75	31.25	31.5	22	21.25	7.75	10	11	2519	60.0	1	2	6.4
Z8.3	36.75	36.5	24.63	24.25	8	5.5	29.75	31.25	31.5	22	21.25	7.75	10	11	2799	66.7	1.5	2	7.75
Z8.4	36.75	36.5	24.63	24.25	8	5.5	29.75	31.25	31.5	22	21.25	7.75	10	11	3499	83.3	2	2	8
Z10.0	37.25	37	21.19	23.88	10	5.5	30.19	31.88	31.5	22.38	21.75	7.88	10	13	3799	90.5	1.5	2	8.75
Z10.1	37.25	37	21.19	23.88	10	5.5	30.19	31.88	31.5	22.38	21.75	7.88	10	13	4599	109.5	2	2.5	9.42
Z10.2	37.25	37	21.19	23.88	10	5.5	30.19	31.88	31.5	22.38	21.75	7.88	10	13	5249	125.0	3	2.5	9.5
Z10.3	37.25	37	21.19	23.88	10	5.5	30.19	31.88	31.5	22.38	21.75	7.88	10	13	5319	126.7	5	3	10.88
Z12.0	37.88	37	21.19	23.88	12	5.5	30.19	32.25	32.5	22.25	21.75	7.88	10.5	15	6299	150.0	3	3	13.4
Z12.1	37.88	37	21.19	24.25	12	5.5	30.19	32.25	32.5	22.25	21.75	7.88	10.5	15	7349	175.0	5	3	12.5
Z12.2	37.88	37	21.19	24.25	12	5.5	30.19	32.25	32.5	22.25	21.75	7.88	10.5	15	8400	200.0	5	3	13.88
Z12.3	37.88	37	21.19	24.25	12	5.5	30.19	32.25	32.5	22.25	21.75	7.88	10.5	15	9000	214.3	5	3	14

About Zeeco.

With thousands of process installations to our name and more than 20 global locations, Zeeco has earned an enviable reputation for superior engineering, product performance and professional integrity. After 35 years, we’ve kept a tight rein on the positive differences that have guided us to become the world leader in advanced combustion and environmental systems, so no matter what hemisphere you operate in, you can rest assured that your project will receive exceptional attention, responsiveness, and service. Let us put our experience to work for you. Call or email us today to learn more about the full line of ZEECO® products and services.